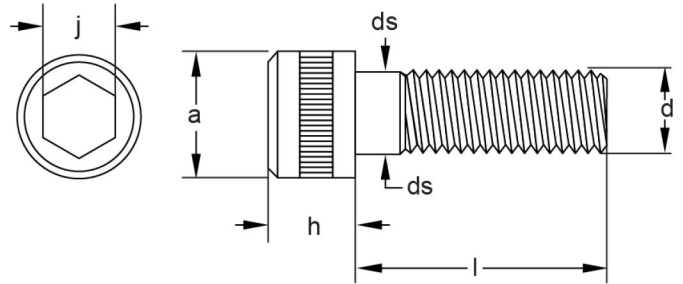


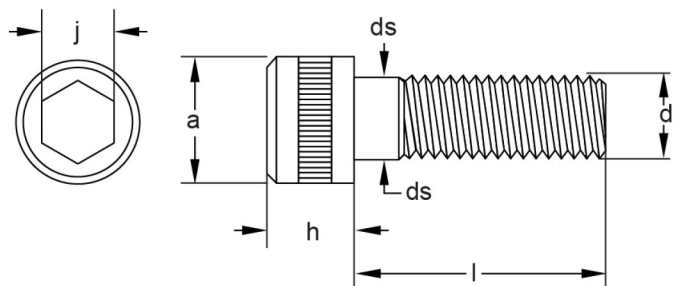
SOCKET SCREWS

Metric Hexagon Socket Cap Screws, Property Class 12.9



Diameter mm	Pitch mm	a		ds		h		Thread	j
		Min	Max	Min	Max	Min	Max		
M2	0.40	3.62	3.80	1.86	2.00	1.91	2.00	16	1.5
M3	0.50	5.32	5.50	2.86	3.00	2.89	3.00	18	2.5
M4	0.70	6.78	7.00	3.82	4.00	3.88	4.00	20	3.0
M5	0.80	8.28	8.50	4.82	6.00	4.86	5.00	22	4.0
M6	1.00	9.78	10.00	5.82	6.00	5.85	6.00	24	5.0
M8	1.25	12.73	13.00	7.78	8.00	7.83	8.00	28	6.0
M10	1.50	15.73	16.00	9.78	10.00	9.81	10.00	32	8.0
M12	1.75	17.73	18.00	11.73	12.00	11.79	12.00	36	10.0
M14	2.00	20.67	21.00	13.73	14.00	13.57	14.00	40	12.0
M16	2.00	23.67	24.00	15.73	16.00	15.57	16.00	44	14.0
M20	2.50	29.67	30.00	19.67	20.00	19.48	20.00	52	17.0
M24	3.00	35.61	36.00	23.67	24.00	23.48	24.00	60	19.0
M30	3.50	44.61	45.00	29.67	30.00	29.48	30.00	72	22.0
M36	4.00	53.54	54.00	35.61	36.00	35.38	36.00	84	27.0
M42	4.50	62.54	63.00	41.61	42.00	41.38	42.00	96	32.0
M48	5.00	71.54	72.00	47.61	48.00	47.38	48.00	108	36.0

Metric Fine Hexagon Socket Cap Screws, Property Class 12.9



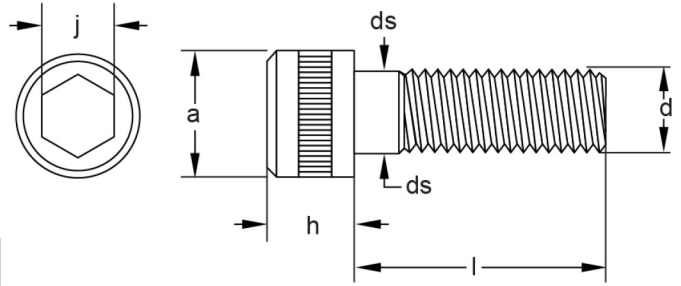
Diameter mm	Pitch mm	a		ds		h		Thread	j
		Min	Max	Min	Max	Min	Max		
M8	1.00	12.73	13.00	7.78	8.00	7.83	8.00	28	6.0
M10	1.25	15.73	16.00	9.78	10.00	9.81	10.00	32	8.0
M12	1.25	17.73	18.00	11.73	12.00	11.79	12.00	36	10.0
M14	1.50	20.67	21.00	13.73	14.00	13.57	14.00	40	12.0
M16	1.50	23.67	24.00	15.73	16.00	15.57	16.00	44	14.0

For more technical support, please contact your local **United Fasteners** branch

The content is owned and the copyright of United Fasteners Australia Pty Ltd.

**UNC & UNF Hexagon Socket Cap Screws,
Alloy Steel**

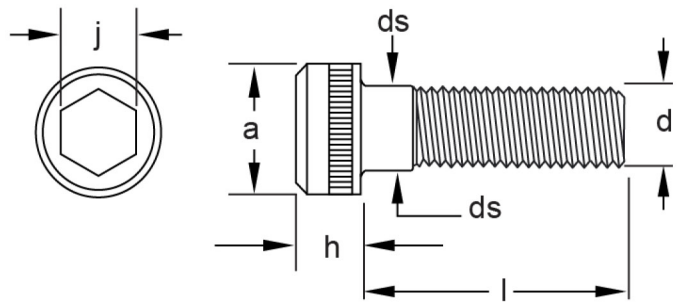
ASME B18.3 (1960 Series)



Diameter	Pitch TPI		a	ds	h	j
	UNC	UNF				
No 4	40	48	0.183	0.112	0.112	3/32
No 5	40	44	0.205	0.125	0.125	3/32
No 6	32	40	0.226	0.138	0.138	7/64
No 8	32	36	0.270	0.164	0.164	9/64
No 10	24	32	0.312	0.190	0.190	5/32
1/4	20	28	0.375	0.250	0.250	3/16
5/16	18	24	0.469	0.313	0.313	1/4
3/8	16	24	0.562	0.375	0.375	5/16
7/16	14	20	0.656	0.438	0.438	3/8
1/2	13	20	0.750	0.500	0.500	3/8
5/8	11	18	0.938	0.625	0.625	1/2
3/4	10	16	1.125	0.750	0.750	5/8
7/8	9	14	1.125	0.875	0.875	3/4
1	8	12	1.312	1.000	1.000	3/4
1 1/4	7	12	1.875	1.250	1.250	7/8
1 1/2	6	12	2.250	1.500	1.500	1

**Metric Low Head Socket Cap Screws,
Property Class 10.9**

DIN 7984

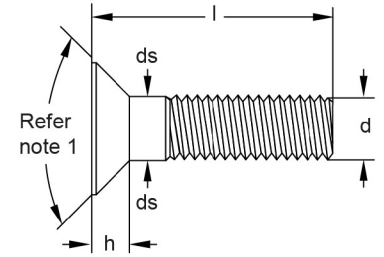
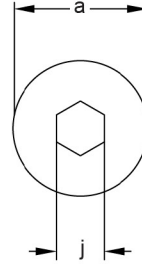


Diameter mm	Pitch mm	a	ds	h	j
		Max	Max	Max	Nom
M4	0.70	7.0	4.0	2.8	2.5
M5	0.80	8.5	5.0	3.5	3.0
M6	1.00	10.0	6.0	4.0	4.0
M8	1.25	13.0	8.0	5.0	5.0
M10	1.50	16.0	10.0	6.0	7.0
M12	1.75	18.0	12.0	7.0	8.0

Metric Flat Countersunk Socket Cap Screws



DIN7991

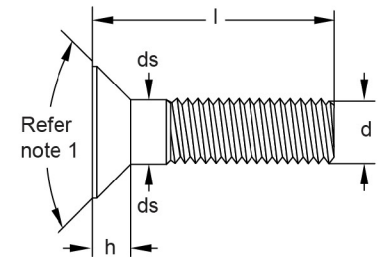
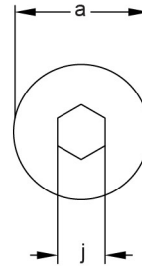


Diameter	Pitch mm	a		ds	h	j
		Min	Max	Max	Max	Nom
M3	0.50	5.70	6.00	3.0	1.70	2.0
M4	0.70	7.64	8.00	4.0	2.30	2.5
M5	0.80	9.64	10.00	5.0	2.80	3.0
M6	1.00	11.57	12.00	6.0	3.30	4.0
M8	1.25	15.57	16.00	8.0	4.40	5.0
M10	1.50	19.48	20.00	10.0	5.50	6.0
M12	1.75	23.48	24.00	12.0	6.50	8.0
M14	2.00	26.48	27.00	14.0	7.00	10.0
M16	2.00	29.48	30.00	16.0	7.50	10.0
M20	2.50	35.38	36.00	20.0	8.50	12.0
M24	3.00	38.38	39.00	24.0	14.00	14.0

UNC & UNF Flat Countersunk Socket Head Screws



ASME B18.3

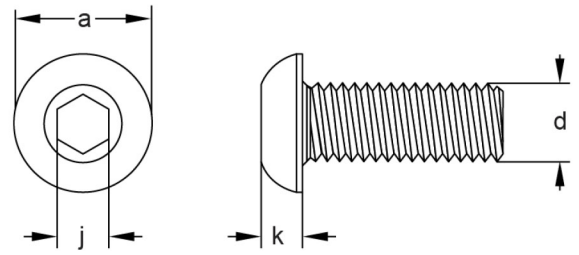


Diameter	Pitch TPI		a		ds	h	j
	UNC	UNF	Min	Max	Max	ref	Nom
No 4	40	48	0.218	0.255	0.1120	0.083	1/16
No 5	40	44	0.240	0.281	0.1250	0.090	5/64
No 6	32	40	0.263	0.307	0.1380	0.097	5/64
No 8	32	36	0.311	0.359	0.1640	0.112	3/32
No 10	24	32	0.359	0.411	0.1900	0.127	1/8
1/4	20	28	0.480	0.531	0.2500	0.161	5/32
5/16	18	24	0.600	0.656	0.3125	0.198	3/16
3/8	16	24	0.720	0.781	0.3750	0.234	7/32
7/16	14	20	0.781	0.844	0.4375	0.234	1/4
1/2	13	20	0.872	0.938	0.5000	0.251	5/16
5/8	11	18	1.112	1.188	0.6250	0.324	3/8
3/4	10	16	1.355	1.438	0.7500	0.396	1/2
7/8	9	14	1.604	1.688	0.8750	0.468	9/16
1	8	12	1.841	1.938	1.0000	0.540	5/8

Metric Socket Button Head Screws

ISO 7380

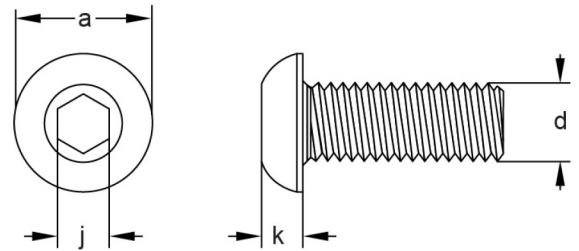
Diameter	Pitch mm	a	j	k
		Max	Nom	Max
M3	0.50	5.70	2.0	1.65
M4	0.70	7.60	2.5	2.20
M5	0.80	9.50	3.0	2.75
M6	1.00	10.50	4.0	3.30
M8	1.25	14.00	5.0	4.40
M10	1.50	17.50	6.0	5.50
M12	1.75	21.00	8.0	6.60
M16	2.00	28.00	10.0	8.80



UNC & UNF Socket Button Head

ASME B18.3

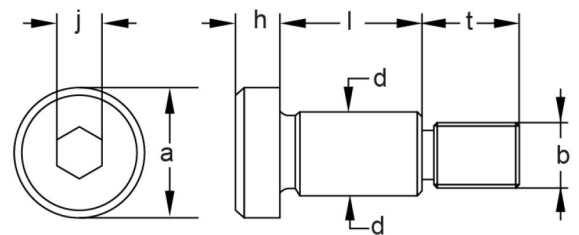
Diameter	a	j	k
	Max	Nom	Max
No 4	0.213	1/16	0.059
No 6	0.262	5/64	0.073
No 8	0.312	3/32	0.087
No 10	0.361	1/8	0.101
1/4	0.437	5/32	0.132
5/16	0.547	3/16	0.166
3/8	0.656	7/32	0.199
1/2	0.875	5/16	0.265
5/8	1.000	3/8	0.331



Metric Socket Shoulder Screws

ISO 7379

Normal Size	d		a	h	b	t	j
	Min	Max	Min	Max	Max	Max	Nom
M5	5.960	5.990	10.00	4.5	M5	9.50	3.0
M6	7.951	7.987	13.00	5.5	M6	11.00	4.0
M8	9.951	9.987	16.00	7.0	M8	13.00	5.0
M10	11.941	11.984	18.00	9.0	M10	16.00	6.0
M12	15.941	15.984	24.00	11.0	M12	18.00	8.0
M16	19.928	19.980	30.00	14.0	M16	22.00	10.0
M20	23.928	23.980	36.00	16.0	M20	27.00	12.0



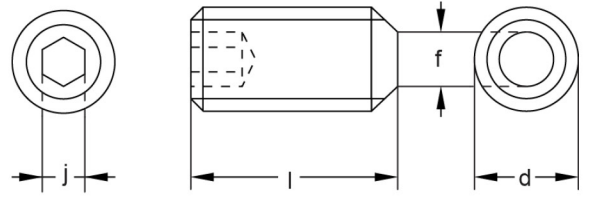
For more technical support, please contact your local **United Fasteners** branch

The content is owned and the copyright of United Fasteners Australia Pty Ltd.

Socket Set Screws Metric Coarse Pitch Threads

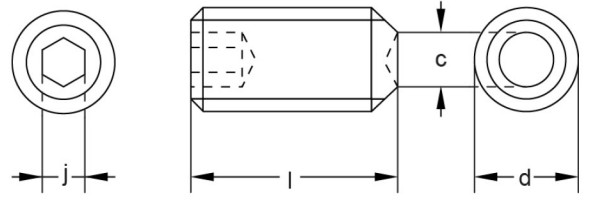
ISO 4026 to 4029

Diameter	j	f	c	h	p
	Nom	Max	Max	Max	Max
M2	0.9	1.0	1.0		
M2.5	1.3	1.5	1.2		
M3	1.5	2.0	1.4	2.0	1
M4	2.0	2.5	2.0	2.5	1.25
M5	2.5	3.5	2.5	3.5	1.5
M6	3.0	4.0	3.0	4.0	1.75
M8	4.0	5.5	5.0	5.5	2.25
M10	5.0	7.0	6.0	7.0	2.75
M12	6.0	8.5	8.0	8.5	3.25
M16	8.0	12.0	10.0	12.0	4.3
M20	10.0	15.0	14.0	15.0	5.3
M24	12.0	18.0	16.0	18.0	6.3



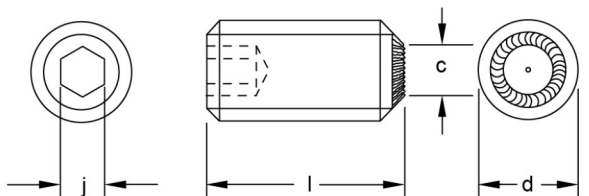
ISO 4026

Flat Point



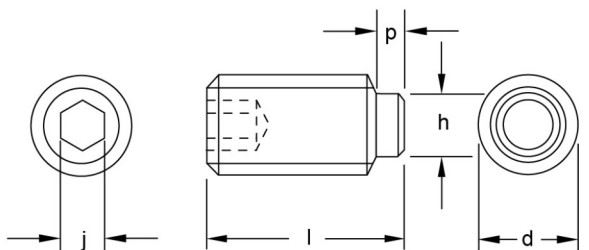
ISO 4029

Cup Point



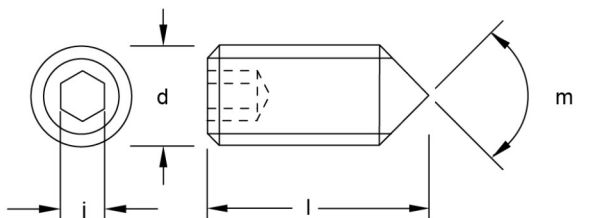
ISO 4029

Knurled Cup Point



ISO 4028

Dog Point



ISO 4027

Cone Point

Socket Set Screws UNC, UNF Threads

ASME B18.3

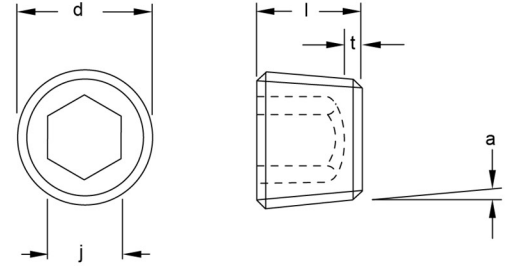
Diameter	j	f	c	r	h	p
	Nom	Max	Max	Max	Max	Max
No 5	1/16	0.067	0.067	0.094	0.083	0.033
No 6	1/16	0.074	0.074	0.104	0.092	0.038
No 8	5/64	0.087	0.087	0.123	0.109	0.043
No 10	3/32	0.102	0.102	0.142	0.127	0.049
1/4	1/8	0.132	0.132	0.188	0.156	0.067
5/16	5/32	0.172	0.172	0.234	0.203	0.082
3/8	3/16	0.212	0.212	0.281	0.250	0.099
7/16	7/32	0.252	0.252	0.328	0.297	0.114
1/2	1/4	0.291	0.291	0.375	0.344	0.130
5/8	5/16	0.371	0.371	0.469	0.496	0.164
3/4	3/8	0.450	0.450	0.562	0.562	0.196
7/8	1/2	0.530	0.530	0.656	0.656	0.227
1	9/16	0.609	0.609	0.750	0.750	0.260

NPTF Dryseal Type Plugs Taper, 3/4" per foot



ASME B2.2 & B1.20.3

NPTF Size	d Nom	Pitch TPI	j Nom	k Min	Overall length l		
					Nom	Min	Max
1/8	0.405	27	3/16	0.062	5/16	0.300	0.324
1/4	0.540	18	1/4	0.073	7/16	0.417	0.457
3/8	0.675	18	5/16	0.084	1/2	0.480	0.520
1/2	0.840	14	3/8	0.095	9/16	0.542	0.582
3/4	1.050	14	9/16	0.125	5/8	0.605	0.645
1	1.315	11.5	5/8	0.125	3/4	0.730	0.770
1 1/4	1.660	11.5	3/4	0.156	13/16	0.792	0.832
1 1/2	1.900	11.5	1	0.156	13/16	0.780	0.843

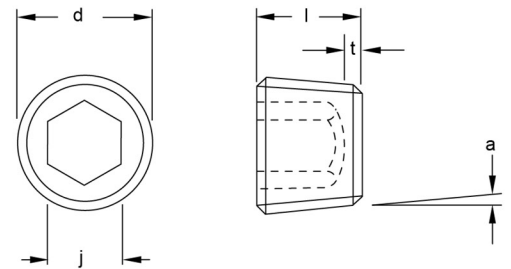


BSPT Dryseal Type Plugs Taper, 3/4" per foot



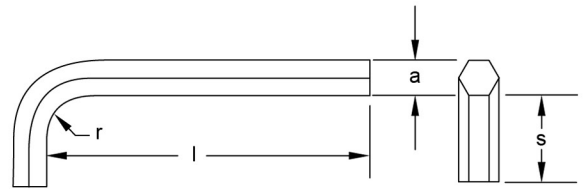
BS 21

BSPT Size	d Nom	Pitch TPI	j Nom	k Min	Overall length l		
					Nom	Min	Max
1/8	0.399	28	3/16	0.081	3/8	0.370	0.380
1/4	0.538	19	1/4	0.112	1/2	0.495	0.505
3/8	0.679	19	5/16	0.161	9/16	0.557	0.567
1/2	0.853	14	3/8	0.175	11/16	0.682	0.692
5/8	0.933	14	1/2	0.175	3/4	0.745	0.755
3/4	1.072	14	9/16	0.238	13/16	0.807	0.817
1	1.332	11	5/8	0.238	1	0.995	1.005
1 1/4	1.703	11	3/4	0.350	1 1/4	1.245	1.255
1 1/2	1.933	11	3/4	0.350	1 1/4	1.245	1.255



Metric Hexagon Socket Wrenches

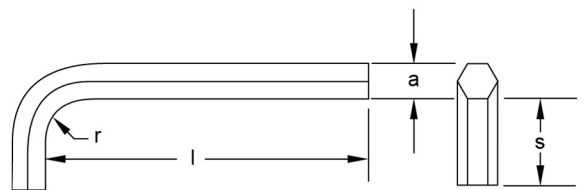
ISO 2936 DIN911



Nom mm	Key Size a		r	s	Std Series	Long Series
	Min	Max	Approx	Nom	l Nom	l Nom
1.5	1.47	1.50	3.0	14.0	45.0	62.0
2	1.97	2.00	4.0	16.0	50.0	75.0
2.5	2.47	2.50	5.0	18.0	56.0	85.0
3	2.96	3.00	6.0	20.0	63.0	90.0
4	3.96	4.00	7.0	25.0	70.0	100.0
5	4.96	5.00	8.0	28.0	80.0	115.0
6	5.95	6.00	9.0	32.0	90.0	135.0
8	7.95	8.00	11.0	36.0	100.0	150.0
10	9.95	10.00	12.0	40.0	112.0	170.0
12	11.95	12.00	14.0	45.0	125.0	190.0
14	13.93	14.00	16.0	56.0	140.0	215.0
17	16.93	17.00	19.0	60.0	160.0	245.0
19	18.93	19.00	21.0	70.0	180.0	265.0
22	21.93	22.00	24.0	80.0	200.0	275.0
24	23.93	24.00	26.0	90.0	224.0	299.0
27	26.82	27.00	29.0	100.0	250.0	315.0
32	31.82	32.00	34.0	125.0	315.0	364.0

Imperial Hexagon Socket Wrenches

ASME B18.3



Nom mm	Key Size a		r	s	Short Series	Long Series
	Min	Max	Min	Min	l Max	l Max
0.028	0.0275	0.0280	0.062	0.125	1.312	2.688
0.035	0.0345	0.0350	0.062	0.250	1.312	2.766
0.050	0.0490	0.0500	0.062	0.438	1.750	2.938
1/16	0.0615	0.0625	0.062	0.469	1.844	3.094
5/64	0.0771	0.0781	0.078	0.516	1.969	3.281
3/32	0.0927	0.0937	0.094	0.562	2.094	3.469
7/64	0.1079	0.1094	0.109	0.609	2.219	3.656
1/8	0.1235	0.1250	0.125	0.656	2.344	3.844
9/64	0.1391	0.1406	0.141	0.703	2.469	4.031
5/32	0.1547	0.1563	0.156	0.750	2.594	4.219
3/16	0.1860	0.1875	0.188	0.844	2.844	4.594
7/32	0.2172	0.2187	0.219	0.938	3.094	4.969
1/4	0.2485	0.2500	0.250	1.031	3.344	5.344
5/16	0.3110	0.3125	0.312	1.156	3.844	6.094
3/8	0.3730	0.3750	0.375	1.281	4.344	6.844
7/16	0.3455	0.4375	0.438	1.406	4.844	7.594
1/2	0.4975	0.5000	0.500	1.531	5.344	8.344
9/16	0.5600	0.5625	0.562	1.656	5.844	9.094
5/8	0.6225	0.6250	0.625	1.781	6.344	9.844
3/4	0.7470	0.7500	0.750	2.031	7.344	11.344
7/8	0.8720	0.8750	0.875	2.281	8.344	12.844
1	0.9970	1.0000	1.000	2.531	9.344	14.344