

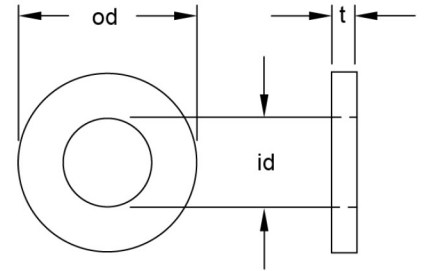
WASHERS

Metric Flat Round Washers; Normal series

Product grade C



AS 1237.1



Bolt	Inside Diam id	Outside Diam od	Thickness t
Diam mm	Nominal	Nominal	Nominal
M1.6	1.8	4	0.3
M2	2.4	5	0.3
M2.5	2.9	7	0.5
M3	3.4	7	0.5
M4	4.5	9	0.8
M5	5.5	10	1.0
M6	6.6	12	1.6
M8	9.0	16	1.6
M10	11.0	20	2.0
M12	13.5	24	2.5
M14	15.5	28	2.5
M16	17.5	30	3.0
M18	20.0	34	3.0
M20	22.0	37	3.0
M22	24.0	39	3.0
M24	26.0	44	4.0
M27	30.0	50	4.0
M30	33.0	56	4.0
M33	36.0	60	5.0
M36	39.0	66	5.0

TECHNICAL EXPERTISE

Our team are solution focused individuals, with in-depth product knowledge and sourcing experience.

We're driven to fully understand our customers' needs

CONTACT US TODAY



For more technical support, please contact your local **United Fasteners** branch

The content is owned and the copyright of United Fasteners Australia Pty Ltd.

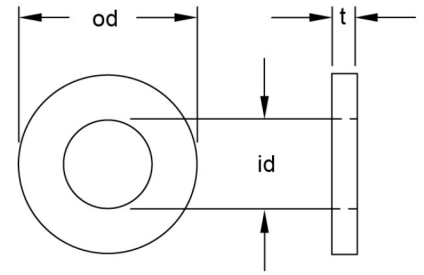
Metric Flat Round Washers; Large Series

Product grade C



AS 1237.1

Bolt	Inside Diam id	Outside Diam od	Thickness t
Diam mm	Nominal	Nominal	Nominal
M8	9.0	24	2.0
M10	11.0	30	2.5
M12	13.5	37	3.0
M14	15.5	44	3.0
M16	17.5	50	3.0
M18	20.0	56	4.0
M20	22.0	60	4.0
M22	24.0	66	5.0
M24	26.0	72	5.0
M27	30.0	85	6.0
M30	33.0	92	6.0
M33	36.0	105	6.0
M36	39.0	110	8.0
M39	42.0	120	8.0
M42	45.0	125	10.0
M48	52.0	145	10.0



Metric Flat Round Washers; Extra Large Series

Product grade C



AS 1237.1

Bolt	Inside Diam id	Outside Diam od	Thickness t
Diam mm	Nominal	Nominal	Nominal
M5	5.5	18.0	2.0
M6	6.6	22.0	2.0
M8	9.0	28.0	3.0
M10	11.0	34.0	3.0
M12	13.5	44.0	4.0
M14	15.5	50.0	4.0
M16	17.5	56.0	5.0
M18	20.0	60.0	5.0
M20	22.0	72.0	6.0
M22	24.0	80.0	6.0
M24	26.0	85.0	6.0
M27	30.0	98.0	6.0
M30	33.0	105.0	6.0
M33	36.0	115.0	8.0
M36	39.0	125.0	8.0
M39	42.0	140.0	10.0

